



AQUIND Limited

AQUIND INTERCONNECTOR

**Environmental Statement Addendum 3 –
Appendix 5.27 Marine Figures 29.1A to 29.5A**

The Planning Act 2008

The Infrastructure Planning (Applications: Prescribed Forms and Procedure) Regulations
2009 – Regulation 5(2)(a)

The Infrastructure Planning (Environmental Impact Assessment) Regulations 2017

Document Ref: 7.8.3.37

PINS Ref.: EN020022

AQUIND Limited

AQUIND INTERCONNECTOR

Environmental Statement Addendum 3 –
Appendix 5.27 Marine Figures 29.1A to 29.5A

PINS REF.: EN020022

DOCUMENT: 7.8.3.37

DATE: 28 APRIL 2023

WSP

WSP House

70 Chancery Lane

London

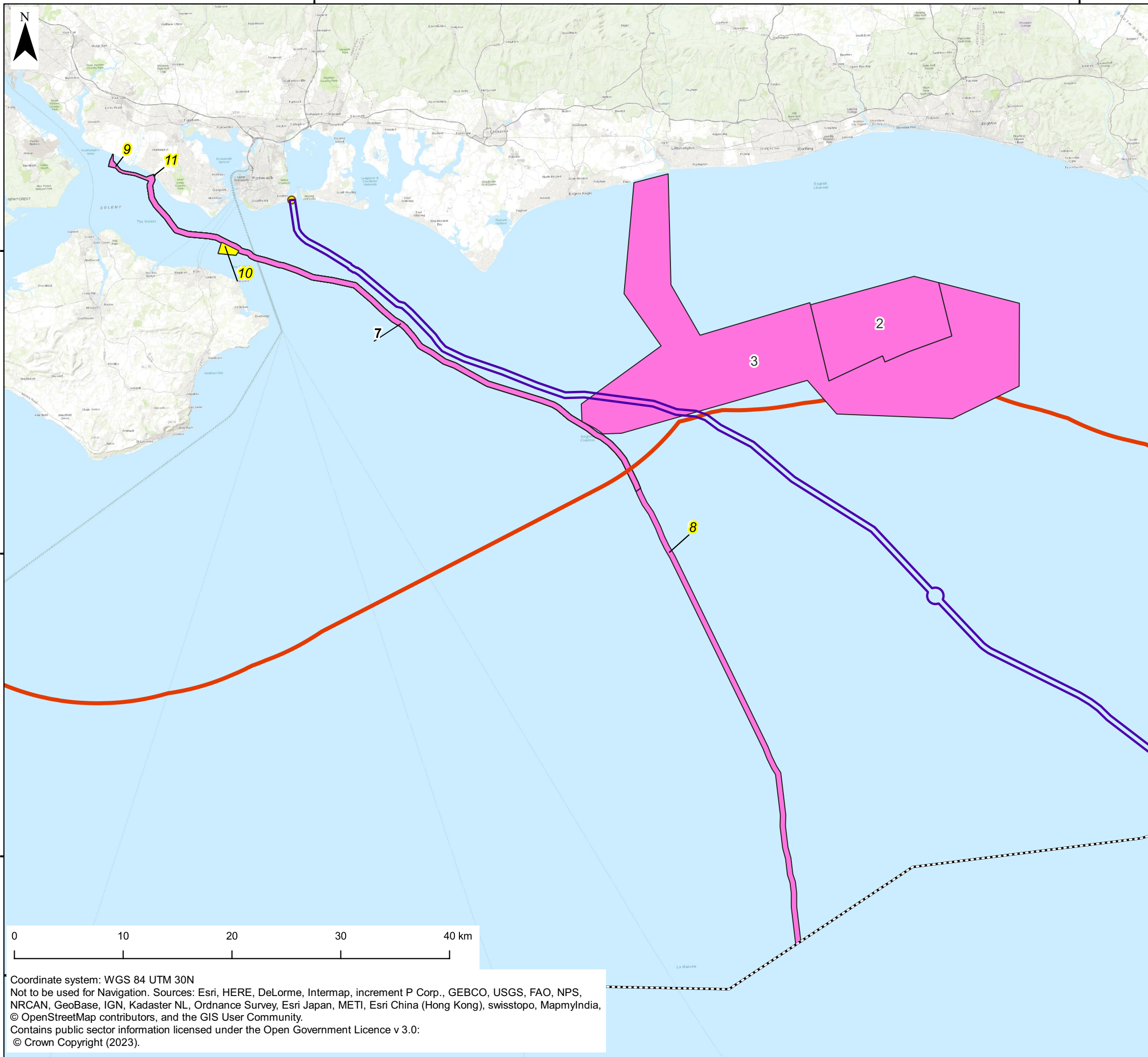
WC2A 1AF

+44 20 7314 5000



1°0.000'W

0°0.000'



AQUIND Interconnector

- Landfall location
 - Marine Cable Corridor
 - 12 nautical mile limit
 - Exclusive Economic Zone (EEZ) boundary
- Major projects (data from MMO & TCE, July 2022)
- Project remains valid
 - Project no longer valid

Projects are shown where the whole or part of the dataset polygons are located within 25 km of the UK Marine Cable Corridor.
 Projects no longer valid have labels highlighted yellow with italic text.
 Number labels reflect the ID number of each project shown in the cumulative assessment matrices.

The Infrastructure Planning (Environmental Impact Assessment) Regulations 2017.

01	14/03/2023	JO	FIRST DRAFT	SM	SL
REV	DATE	BY	DESCRIPTION	CHK	APP

DRAWING STATUS: Approved



The Natural Power Consultants Limited, The Green House
 Forrest Estate, Dalry, Castle Douglas, DG7 3XS, UK
 Tel: +44 (0)1644 430008 www.naturalpower.com

CLIENT:



PROJECT:
AQUIND Interconnector

TITLE:
Figure 29.1A. Major Projects within the UK Marine Area 2023

SCALE AT A3: 1:350,000	CHECKED: SM	APPROVED: SL
---------------------------	----------------	-----------------

PROJECT NO: EN020022	DESIGNED: JO	DRAWN: JO	DATE: 31/03/2023
-------------------------	-----------------	--------------	---------------------

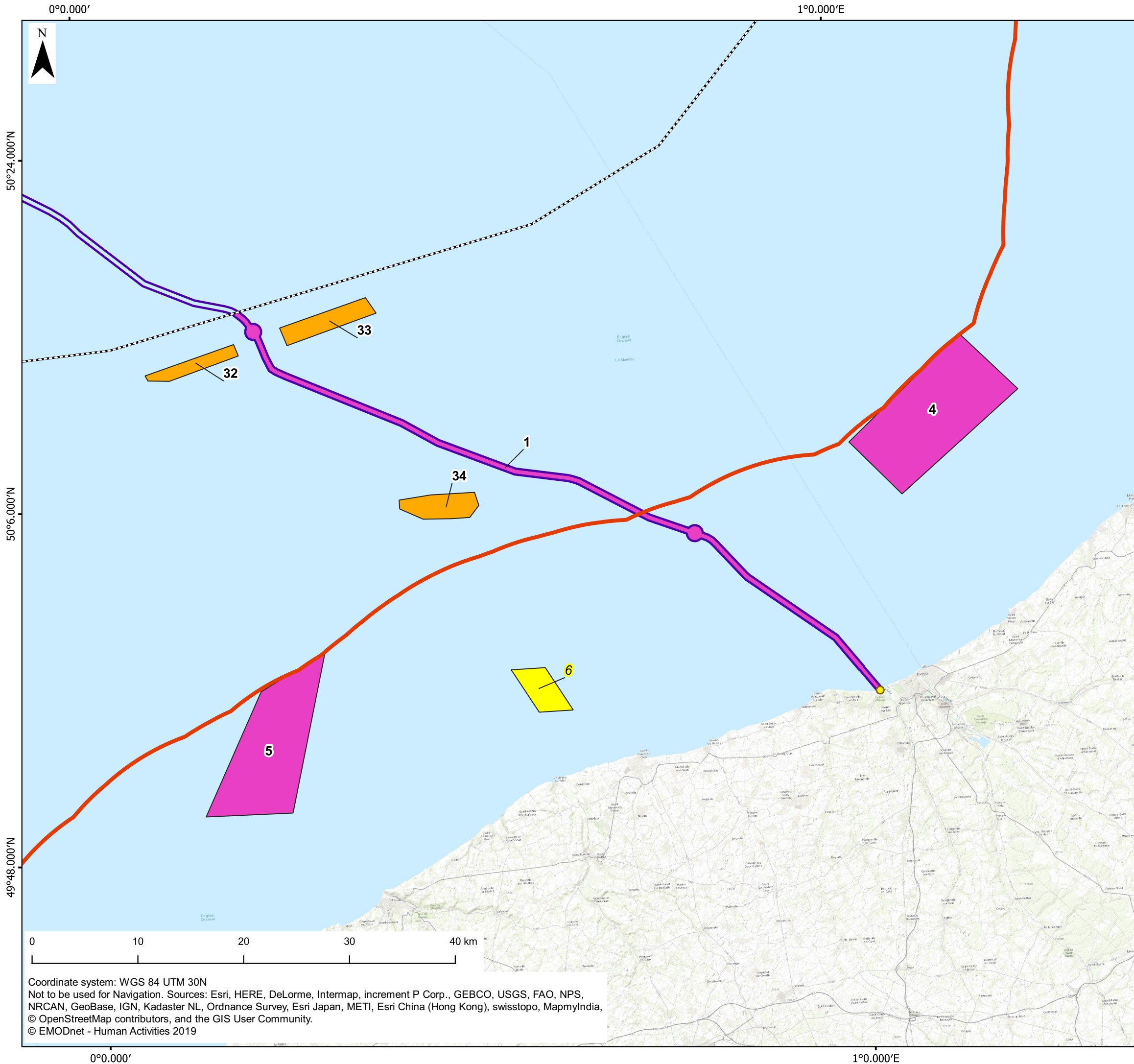
DRAWING NO: EN020022 - ES - 29.1A.	REV.NO: 01
--	----------------------

© WSP UK Ltd

Coordinate system: WGS 84 UTM 30N
 Not to be used for Navigation. Sources: Esri, HERE, DeLorme, Intermap, increment P Corp., GEBCO, USGS, FAO, NPS, NRCAN, GeoBase, IGN, Kadaster NL, Ordnance Survey, Esri Japan, METI, Esri China (Hong Kong), swisstopo, MapmyIndia, © OpenStreetMap contributors, and the GIS User Community.
 Contains public sector information licensed under the Open Government Licence v 3.0:
 © Crown Copyright (2023).

1°0.000'W

0°0.000'



AQUIND Interconnector

- Landfall location
- ▭ Marine Cable Corridor
- 12 nautical mile limit
- - - Exclusive Economic Zone (EEZ) boundary
- ▭ Aggregate dredging project (data from Ifremer/Sextant, July 2022)

Major Project (data from EMODnet, December 2022)

- ▭ Project still valid
- ▭ Project no longer valid

Number labels reflect the ID number of each project shown in the cumulative assessment matrices.
Projects no longer valid have labels highlighted yellow with italic text.

The Infrastructure Planning (Environmental Impact Assessment) Regulations 2017.

01	30/03/2024	JO	FIRST DRAFT	SM	SL
REV	DATE	BY	DESCRIPTION	CHK	APP

DRAWING STATUS: **Approved**



natural power

The Natural Power Consultants Limited, The Green House
Forrest Estate, Dalry, Castle Douglas, DG7 3XS, UK
Tel: +44 (0)1644 430008 www.naturalpower.com

CLIENT:



PROJECT:
AQUIND Interconnector

TITLE:
Figure 29.2A. Major and Aggregate Projects within the French Marine Area 2023

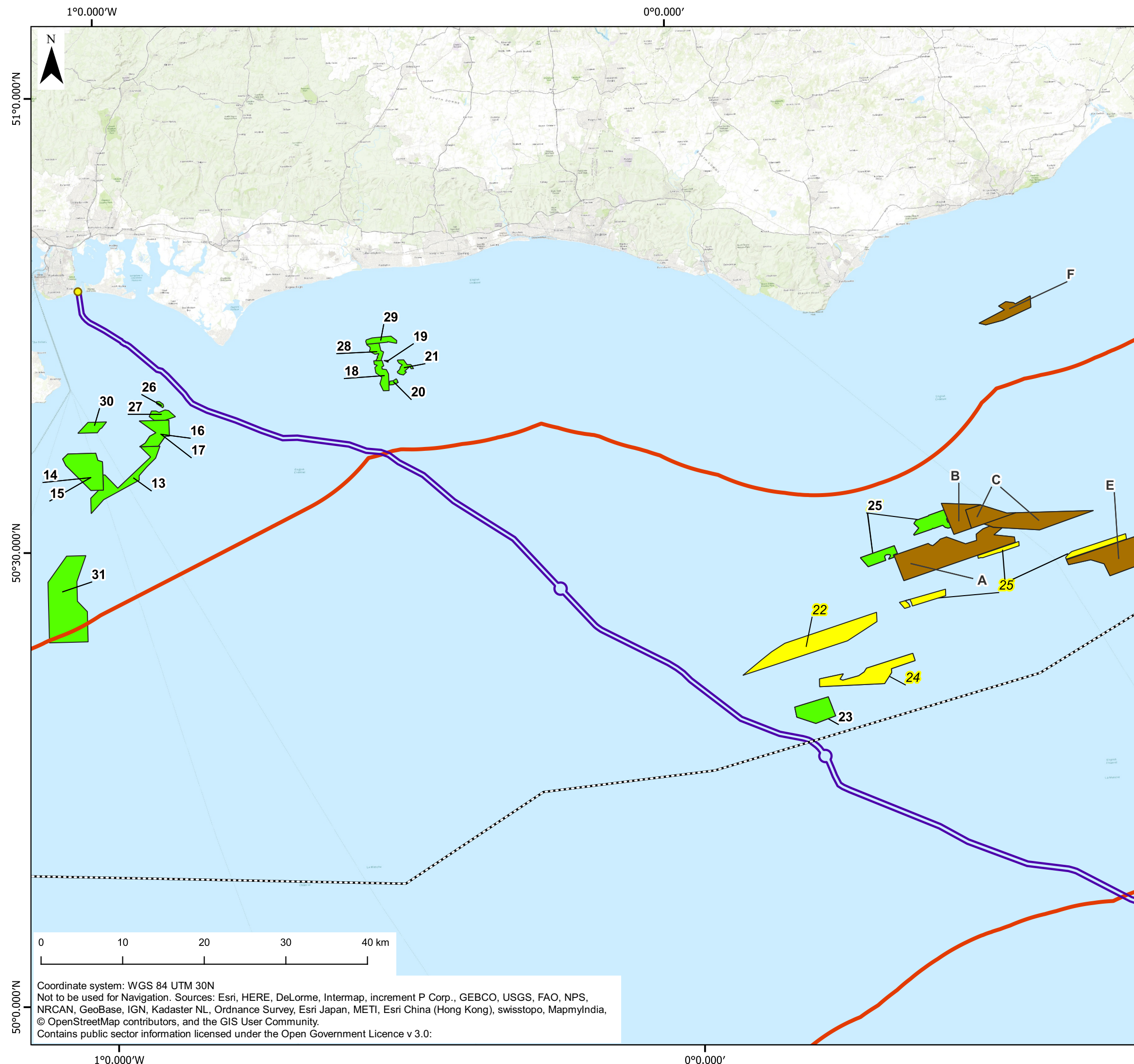
SCALE AT A3: 1:350,000	CHECKED: SM	APPROVED: SL
---------------------------	----------------	-----------------

PROJECT NO: EN020022	DESIGNED: JO	DRAWN: JO	DATE: 31/03/2023
-------------------------	-----------------	--------------	---------------------

DRAWING NO: EN020022 - ES - 29.2A. GB201394_M_148_A	REV.NO. 01
--	----------------------

© WSP UK Ltd

Coordinate system: WGS 84 UTM 30N
Not to be used for Navigation. Sources: Esri, HERE, DeLorme, Intermap, increment P Corp., GEBCO, USGS, FAO, NPS, NRCAN, GeoBase, IGN, Kadaster NL, Ordnance Survey, Esri Japan, METI, Esri China (Hong Kong), swisstopo, MapmyIndia, © OpenStreetMap contributors, and the GIS User Community.
© EMODnet - Human Activities 2019



AQUIND Interconnector

- Landfall location
- ▭ Marine Cable Corridor
- 12 nautical mile Limit
- - - Exclusive Economic Zone (EEZ) boundary

Aggregate dredging projects (data from MMO, July 2022)

- Project remains valid
- Project no longer valid
- New project

Projects are shown where the whole or part of the dataset polygons are located within 25 km of the UK Marine Cable Corridor. Projects no longer valid have labels highlighted yellow with italic text. Letter labels reflect each new project identified in 2023 and shown in the cumulative assessment matrices. Number labels reflect the ID number of each project shown in the cumulative assessment matrices

The Infrastructure Planning (Environmental Impact Assessment) Regulations 2017.

01	30/03/2023	JO	FIRST DRAFT	SM	SL
----	------------	----	-------------	----	----

REV	DATE	BY	DESCRIPTION	CHK	APP
-----	------	----	-------------	-----	-----

DRAWING STATUS: **Approved**



natural power

The Natural Power Consultants Limited, The Green House
Forrest Estate, Dalry, Castle Douglas, DG7 3XS, UK
Tel: +44 (0)1644 430008 www.naturalpower.com

CLIENT:



PROJECT: **AQUIND Interconnector**

TITLE: **Figure 29.3A. Aggregate Projects within the UK Marine Area 2023**

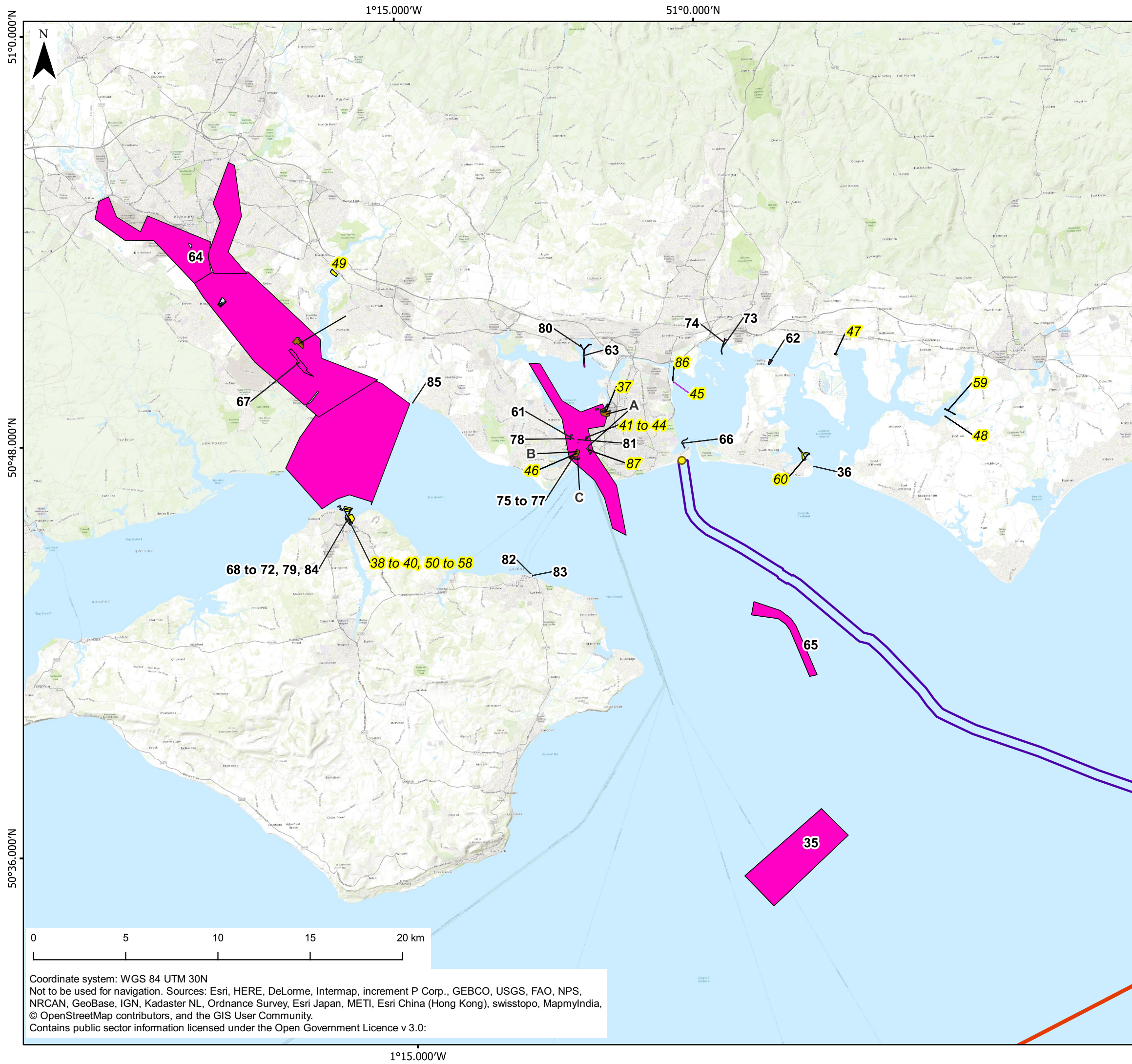
SCALE AT A3: 1:450,000	CHECKED: SM	APPROVED: SL
---------------------------	----------------	-----------------

PROJECT NO: EN020022	DESIGNED: JO	DRAWN: JO	DATE: 31/03/2023
-------------------------	-----------------	--------------	---------------------

DRAWING NO: EN020022 - ES - 29.3A. GB201394_M_142_A	REV.NO: 01
--	----------------------

© WSP UK Ltd

Coordinate system: WGS 84 UTM 30N
Not to be used for Navigation. Sources: Esri, HERE, DeLorme, Intermap, increment P Corp., GEBCO, USGS, FAO, NPS, NRCAN, GeoBase, IGN, Kadaster NL, Ordnance Survey, Esri Japan, METI, Esri China (Hong Kong), swisstopo, MapmyIndia, © OpenStreetMap contributors, and the GIS User Community.
Contains public sector information licensed under the Open Government Licence v 3.0:



AQUIND Interconnector

- Landfall location
- ▭ Marine Cable Corridor
- 12 nautical mile limit

Dredge and disposal projects (data from MMO, July 2022)

- ▭ Project remains valid
- ▭ Project no longer valid
- ▭ New project

Projects are shown where the whole or part of the dataset polygons are located within 25 km of the UK Marine Cable Corridor. Projects no longer valid have labels highlighted yellow with italic text. Letter labels reflect each new project identified in 2023 and shown in the cumulative assessment matrices. Number labels reflect the ID number of each project shown in the cumulative assessment matrices.

The Infrastructure Planning (Environmental Impact Assessment) Regulations 2017.

01	14/03/2023	JO	FIRST DRAFT	SM	SL
REV	DATE	BY	DESCRIPTION	CHK	APP

DRAWING STATUS: **Approved**



natural power

The Natural Power Consultants Limited, The Green House
Forrest Estate, Dalry, Castle Douglas, DG7 3XS, UK
Tel: +44 (0)1644 430008 www.naturalpower.com

CLIENT:



PROJECT: **AQUIND Interconnector**

TITLE: **Figure 29.4A. Dredge and Disposal Projects within the UK Marine Area 2023**

SCALE AT A3: 1:200,000	CHECKED: SM	APPROVED: SL
---------------------------	----------------	-----------------

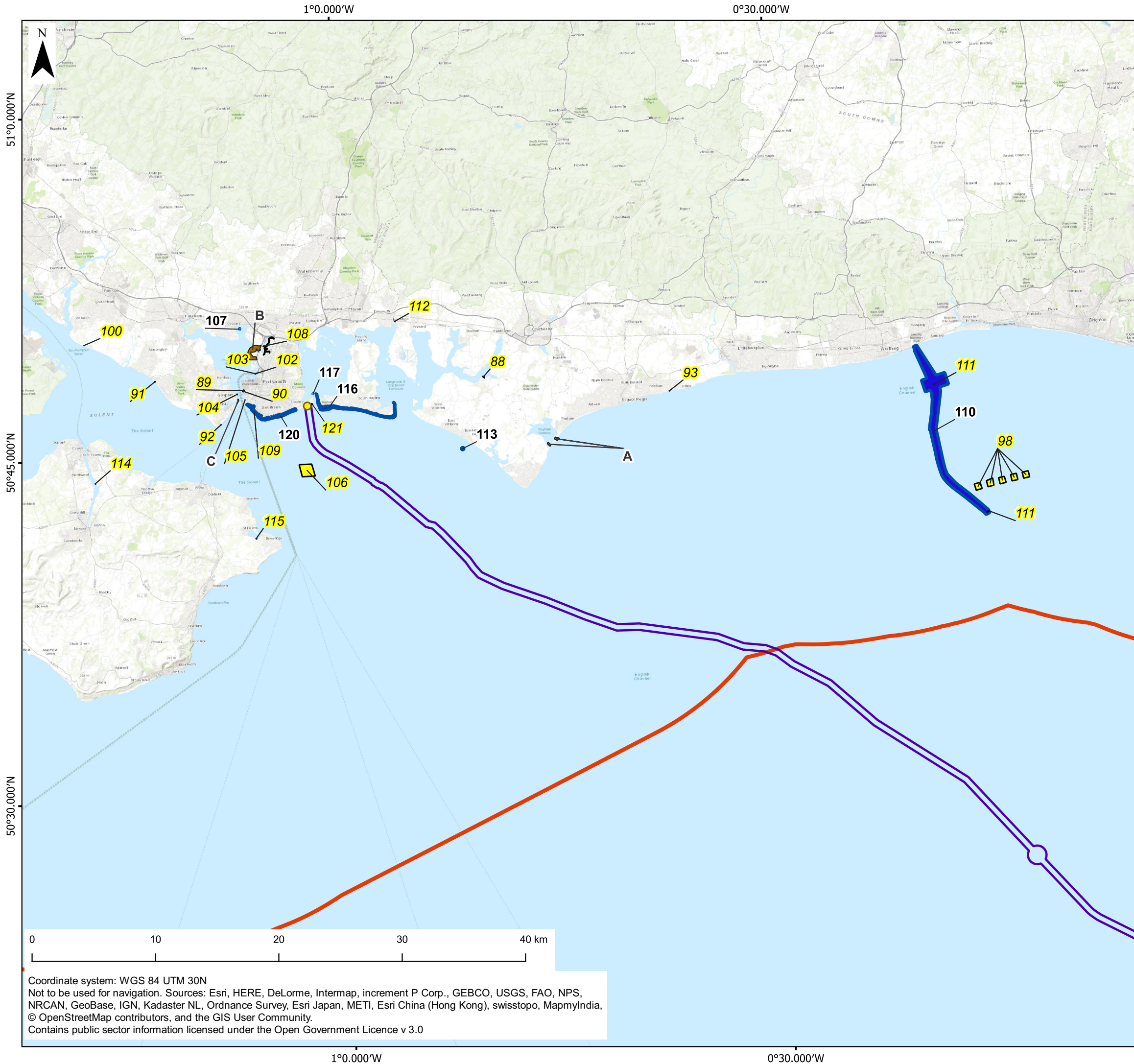
PROJECT NO: EN020022	DESIGNED: JO	DRAWN: JO	DATE: 31/03/2023
-------------------------	-----------------	--------------	---------------------

DRAWING NO: EN020022 - ES - 29.4A.	REV.NO: 01
--	----------------------

GB201394_M_145_A

© WSP UK Ltd

Coordinate system: WGS 84 UTM 30N
Not to be used for navigation. Sources: Esri, HERE, DeLorme, Intermap, increment P Corp., GEBCO, USGS, FAO, NPS, NRCAN, GeoBase, IGN, Kadaster NL, Ordnance Survey, Esri Japan, METI, Esri China (Hong Kong), swisstopo, MapmyIndia, © OpenStreetMap contributors, and the GIS User Community.
Contains public sector information licensed under the Open Government Licence v 3.0:



AQUIND Interconnector

- Landfall location
- ▭ Marine Cable Corridor
- 12 nautical mile limit

Coastal project (data from MMO, July 2022)

- Project remains valid
- Project no longer valid
- New project

Projects are shown where the whole or part of the dataset polygons are located within 25 km of the UK Marine Cable Corridor. Projects no longer valid have labels highlighted yellow with italic text. Letter labels reflect each new project identified in 2023 and shown in the cumulative assessment matrices. Number labels reflect the ID number of each project shown in the cumulative assessment matrices.

The Infrastructure Planning (Environmental Impact Assessment) Regulations 2017.

01	30/03/2023	JO	FIRST DRAFT	SM	SL
REV	DATE	BY	DESCRIPTION	CHK	APP

DRAWING STATUS: **Approved**



natural power

The Natural Power Consultants Limited, The Green House
Forrest Estate, Dalry, Castle Douglas, DG7 3XS, UK
Tel: +44 (0)1644 430008 www.naturalpower.com

CLIENT:



PROJECT: **AQUIND Interconnector**

TITLE: **Figure 29.5A. Coastal Projects within the UK Marine Area 2023**

SCALE AT A3: 1:300,000	CHECKED: SM	APPROVED: SL
---------------------------	----------------	-----------------

PROJECT NO: EN020022	DESIGNED: JO	DRAWN: JO	DATE: 31/03/2023
-------------------------	-----------------	--------------	---------------------

DRAWING NO: EN020022 - ES - 29.5A.	REV.NO: 01
--	----------------------

GB201394_M_143_A

© WSP UK Ltd

Coordinate system: WGS 84 UTM 30N
Not to be used for navigation. Sources: Esri, HERE, DeLorme, Intermap, increment P Corp., GEBCO, USGS, FAO, NPS, NRCAN, GeoBase, IGN, Kadaster NL, Ordnance Survey, Esri Japan, METI, Esri China (Hong Kong), swisstopo, MapmyIndia, © OpenStreetMap contributors, and the GIS User Community.
Contains public sector information licensed under the Open Government Licence v 3.0